

DESIGN SCHOOL WORKSHOP TWO

Fonts, Colors & Images

Canva

Why fonts, colors, and images matter

F

FONT selection can be a daunting task with the endless possibilities of typefaces, weights, and sizes. When used skillfully, fonts can make your designs distinctive and convey your message with impact.



COLOR relationships are fundamental to great design. Knowing how to navigate the color wheel can help beginner designers understand how to compose stunning and expressive color palettes.



IMAGES capture emotion in ways that can serve to evoke specific responses from your audience. With thoughtful selection and manipulation, you can use these images to tell the story of your design.

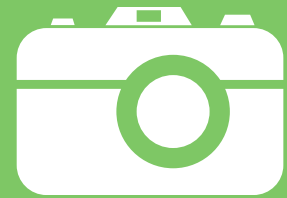
TODAY'S
Agenda

F

Fonts



Colors



Images

F

Fonts

Basic typographic terms



Serif

Typefaces with small decorative edges



SANS SERIF

GEOMETRIC, EASY TO READ TYPEFACES WITHOUT EMBELLISHMENTS



Script

Represents a hand written style with a pen or brush

Serif fonts have small decorative edges at the ends of the letters.

Sans Serif fonts are geometric with no additional strokes at the end of the letters.

Script fonts mimic the stroke of a paintbrush, often linking letters together.

Basic typographic terms

A dark blue background with a pattern of faint, light blue icons representing various tools and design elements. The word "LETTER" is written in white, spaced-out capital letters. Below it, the word "SPACING" is written in large, bold, red capital letters.

LETTER
SPACING

(TRACKING)

To increase, or decrease, the space between letters

Letter spacing (tracking), is the space between letters on a line. Use this technique to elongate shorter words and create flush lines of text.

A light green background with a pattern of faint, light green icons representing various tools and design elements. The word "LINE" is written in white, spaced-out capital letters. Below it, the word "HEIGHT" is written in large, bold, white capital letters.

LINE
HEIGHT

The distance between text from baseline to baseline.

(LEADING)

Line height is the distance between text from baseline to baseline. Alter this space to provide breathing room for tightly tracked lines of copy.

CHOOSING FONTS

Consider the style



magical, whimsical



playful, fun



stylish, sophisticated



strong, reliable

CHOOSING FONTS

Emphasize your message

STRONG

Elegant

hand-made

Simple

Cute

Refined

CHOOSING FONTS

Make it readable

*"If you can't fly, then run,
if you can't run, then walk,
if you can't walk, then crawl,
but whatever you do,
you have to keep moving forward."*

Martin Luther King Jr.

"If you can't fly, then run,
if you can't run, then walk,
if you can't walk, then crawl,
but whatever you do,
you have to keep moving
forward."

Martin Luther King Jr.

Create hierarchy

Title: **Raleway Heavy, size 42**

Subtitle: RALEWAY, all caps, size 21

Body: Raleway thin, size 18

PAIRING FONTS

Create character contrast

Bold and Regular



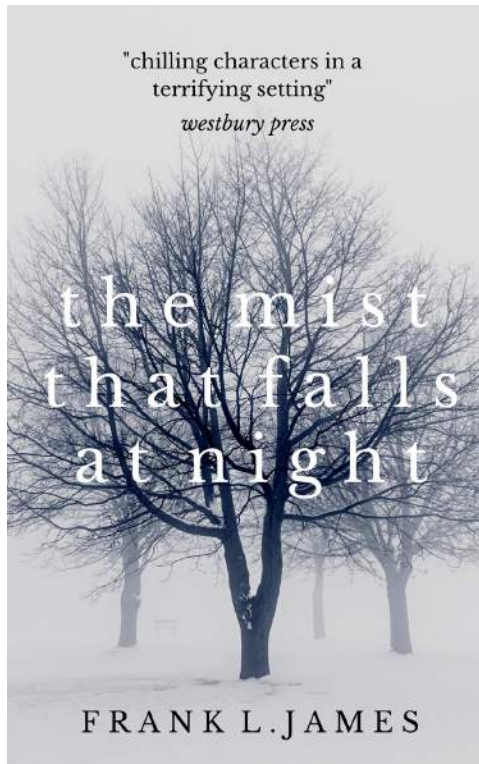
Script and Sans Serif



PAIRING FONTS

Create emphasis

Serif Regular
and Serif Italics



Sans and
Serif Italics



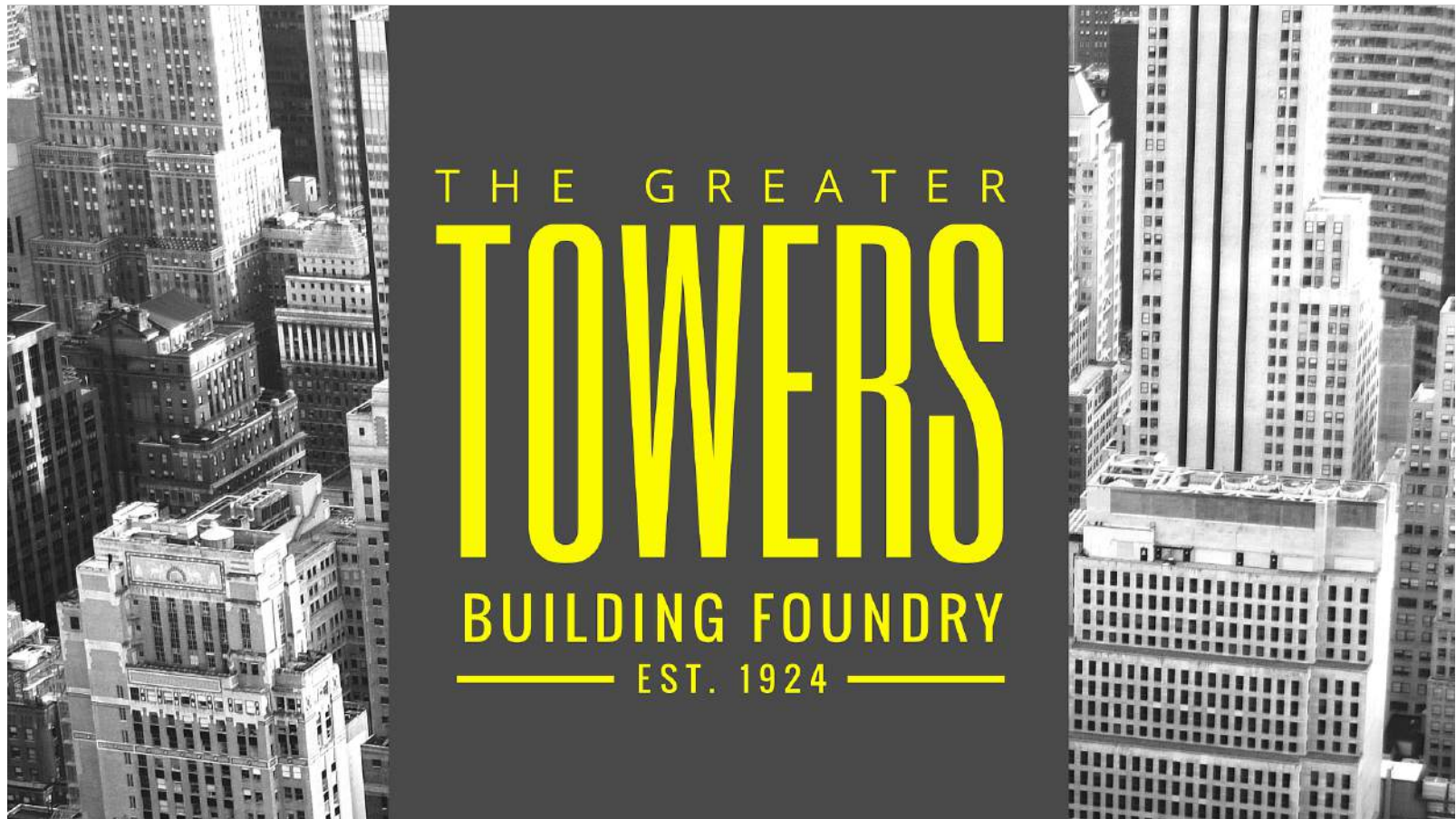
Proceed to tutorial



PAIRING FONTS

Demand attention

Spaced and Condensed



TITLE ARRANGEMENTS

Order and impact through alignment

LEFT
ALIGNED

CENTER
ALIGNED

RIGHT
ALIGNED

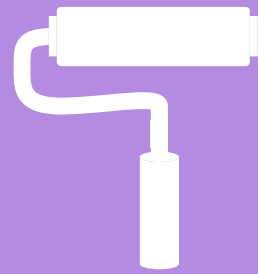
TITLE ARRANGEMENTS

Balance through text spacing



Proceed to tutorial





Colors

CHOOSING COLORS

The color wheel



Hex code: `#00ffd5`

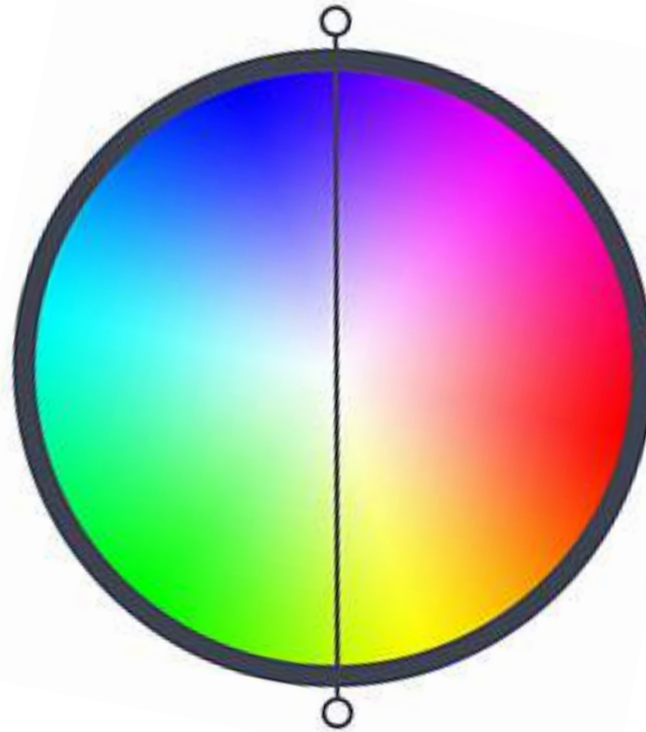
Hex code: `#63ff82`

Hex code: `#ff46a4`

The color wheel is a spectrum of 16 million different colors, each identifiable by a unique hex code.

CHOOSING COLORS

Evoke emotion through color



Cool

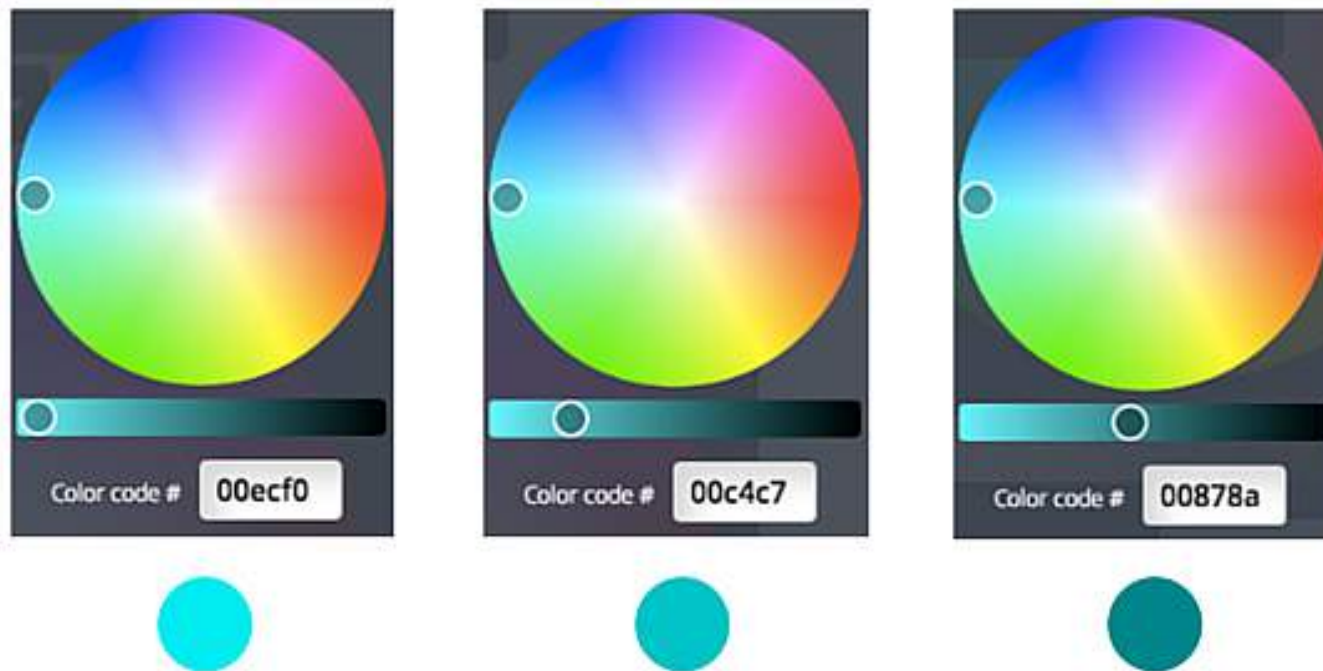
Greens, blues, and purples evoke calm and soothing emotions.

Warm

Reds, oranges, and yellows evoke energy and vibrant emotions.

CHOOSING COLORS

Explore a color gradient



Use the sliders to obtain lighter or darker versions of the same color.

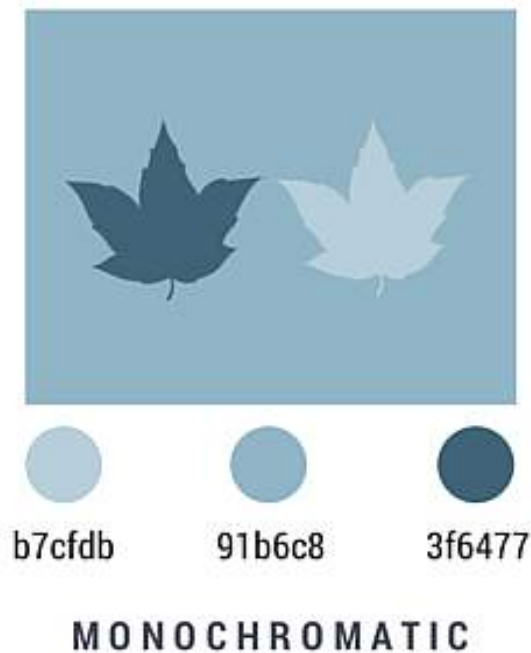
COLOR RELATIONSHIPS

Harmony through similar colors



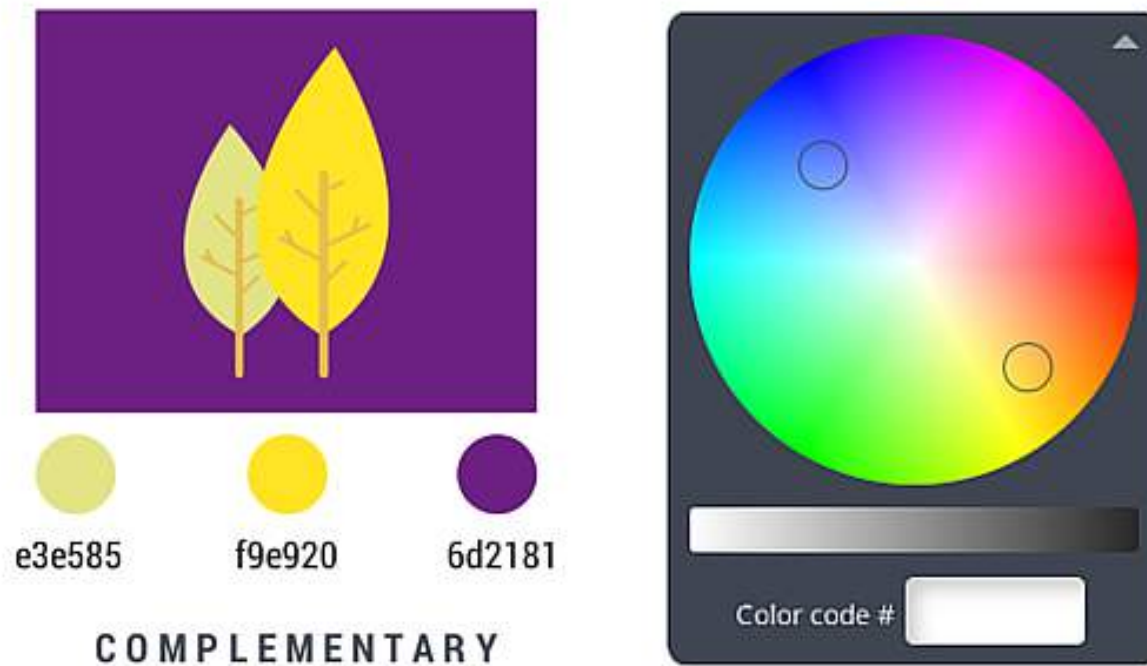
Analogous colors are located next to each other on the color wheel, resulting in seamless, low contrast harmony.

Visual cohesion through monochrome



Monochromatic colors are dark, medium, and light versions of the same color.

Contrast using complements



Complementary colors are on opposite side of the color wheel, creating the most contrast with each other.

USING COLORS

Create a color palette

Use a vibrant color to make elements stand out.



Limit your color palette to four colors.

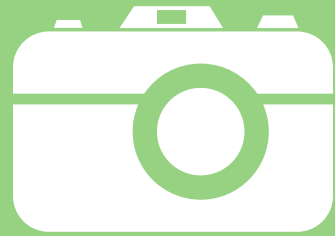


Choose colors appropriate to the subject of your design.



Proceed to tutorial





Images

THE POWER OF GRIDS

Use grids to frame your images



Use grids to frame and resize your images.

THE POWER OF GRIDS

Resize images in your grids



Double-clicking on an image placed within a grid allows you to resize or move images for visually interesting placement.

Proceed to tutorial



Filters to correct and enhance



Make an image crisper and cleaner by adjusting the brightness, contrast, and saturation filters.



PHOTO FILTERS

Evoked moods with filters



Applying photo filters can create or highlight certain moods embodied by your image.

PHOTO FILTERS

Maintain a consistent look and feel



Maintain consistency in your graphics by applying the same filter codes to your images.

Proceed to tutorial

